

**PLACER MOSQUITO & VECTOR CONTROL DISTRICT**  
**BOARD OF TRUSTEES**  
2021 Opportunity Drive  
Roseville, CA 95678  
**REGULAR BOARD MEETING**  
**AGENDA**  
**June 20, 2022 4:30 PM**  
[www.placermosquito.org](http://www.placermosquito.org)

**TELECONFERENCE**

Pursuant to Assembly Bill 361 this meeting will be conducted via teleconference. In the interest of maintaining appropriate social distancing, the Board encourages the public to participate by calling (408) 638-0968 and when prompted, enter the Meeting ID: 985 184 183

or <https://us06web.zoom.us/j/82266211928?pwd=emtFQXZSdXVvVHJxWW1Lc3k3ZlhiZz09>

Page

Board of Trustees

Sandra Amara  
City of Auburn

Will Stockwin  
City of Colfax

Peter Gilbert  
City of Lincoln

Russ Kelley  
Town of Loomis

Merry L. Holliday-  
Hanson, Ph.D.  
Placer County

Jill Gayaldo  
City of Rocklin

Ross Hutchings  
City of Roseville

General Manager  
Joel Buettner

- |       |   |
|-------|---|
| 1     | <b>Call to Order</b>  |
| 2     | <b>Roll Call</b>  |
| 3     | <b>Pledge of Allegiance</b>   |
| 4     | <b>Agenda Review</b>  |
| 5     | <b>Public Comment</b><br><i>Members of the public shall be allowed to address the Board of Trustees on items which are of interest to public and which are within the jurisdiction of the Board, before or during the Board's consideration of the item; however, no action shall be taken on any item not appearing on the agenda unless otherwise authorized by the Board pursuant to Government Code Section 54954.2(b). It is requested that comments be limited to no more than 5 minutes.</i> |
| 3-5   | <b>6 Consent Agenda – Action item</b>   |
| 7-8   | A. Minutes of the May 16, 2022 Regular Board Meeting  |
|       | B. <b>Board Review and Consideration that as a result of the COVID-19 emergency: (i) meeting in person would present imminent risks to the health or safety of attendees; and (ii) the meeting is authorized to be held by teleconference pursuant to Gov. Code, § 54953, subd. (e)(1)(C). – Action Item</b>  |
| 9     | C. <b>Board Review and Consideration to Approve and Adopt FY 2022-2023 Pay Scale</b>  |
| 11-12 | <b>7 Board Review and Consideration of Resolution 2022-07 Requesting Collection of Charges on Tax Roll for Tax Year 2022-23 – Action item Action item</b>   |

Page

- 8 **Board Review and Consideration to Approve the District Budget for Fiscal Year 2022-23**
  - 13-21 A. **Presentation of Supporting documents for PMVCD budget FY 2022-23**
  - 23 B. **Board Review and Consideration to Accept Updated Organizational Chart for Fiscal Year 2022-2023.**
  - 25-28 C. **Resolution 2022-08 Adopting the District Budget for Fiscal Year 2022-23 – Action item**
  - 29 D. **Resolution 2022-09 Appropriating Unassigned Fund Balance to Replace Laboratory Equipment in Fiscal Year 2022-2023.**
- 9 **Staff Reports**
  - 31-33 A. Eastern Placer Report – Angella Falco
  - 35-36 B. Public Information and Outreach Report – Meagan Luevano
  - 31-33 C. Field Operations and Surveillance Report – Jake Hartle
  - 35-36 D. General Manager’s Report – Joel Buettner
- 10 **Board/Staff General Discussion**
- 11 **Announcements**
  - A. The District office will be closed on July 4, 2022 in observance of the Memorial Day Holiday.
  - B. There will be a Special Board Meeting/Public Hearing on July 18, 2022 at 4:00 PM at 2021 Opportunity Drive., Roseville, CA 95678 in lieu of the July 18, 2022 4:30 PM regular Board meeting - Teleconference
- 12 **Adjournment**

*In compliance with the Americans with Disabilities Act, if you are a disabled person and you need a disability-related modification or accommodation to participate in this meeting, please contact the District at (888) 768-2343, fax (916) 380-5455, and/or send e-mail to [info@placermosquito.org](mailto:info@placermosquito.org). Requests must be made as early as possible and at least one-full business day before the start of the meeting. Documents and materials relating to an open session agenda item that are provided to the PMVCD Board less than 72 hours prior to a meeting will be available for public inspection and copying at 2021 Opportunity Drive, Roseville, CA 95678.*

Placer Mosquito & Vector Control District  
Board of Trustees Regular Board Meeting – Minutes  
May 16, 2022, 4:30 PM  
Placer Mosquito & Vector Control District Office  
2021 Opportunity Drive, Roseville, CA 95678

**Pursuant to Governor Newsom's Executive Order N-25-20 and N-33-20, this meeting will be conducted via teleconference. In the interest of maintaining appropriate social distancing, the Board encourages the public to participate by calling (650) 419-1505 and when prompted, enter the Meeting ID: 985 184 183 or <https://v.ringcentral.com/join/985184183>**

1. **Call to Order:** President Kelley called the meeting to order at 4:36 PM.
2. **Roll Call:** Trustees Peter Gilbert, Russ Kelley and Will Stockwin. Trustees Merry Holliday-Hanson and Ross Hutchings were absent with notification.  
**District Employees Present:** District Manager Joel Buettner, Jake Hartle, Angella Falco, Isabel Alvarez and Meagan Luevano.
3. **Pledge of Allegiance** was led by President Kelley.
4. **Agenda Review:** The Board accepted the agenda as presented.
5. **Public Comment:** There were none.

*Trustee Amara arrived at 4:37 PM*

**6. Consent Agenda**

*A motion to approve the minutes of the April 19, 2022, Regular Board Meeting; as a result of the COVID-19 emergency: (i) meeting in person would present imminent risks to the health or safety of attendees; and (ii) the meeting is authorized to be held by teleconference pursuant to Gov. Code, § 54953, subd. (e)(1)(C). 2021; was made by Trustee Stockwin seconded by Trustee Gilbert approved by roll call vote.*

*Ayes: Trustees Amara, Gilbert, Kelley and Stockwin*

*Noes: ∅ Abstain: ∅ Absent: Trustees Gayaldo, Holliday-Hanson and Hutchings*

**7. Board Review and Consideration of Resolution 2022-04**

*A motion to approve Resolution 2022-04 accepting the Preliminary Engineer's Report for the Mosquito Control District and the East County Mosquito Control and Disease Prevention Assessment District and Scheduling the Public Hearing for July 18, 2022 was made by Trustee Gilbert, seconded by Trustee Stockwin, approved by roll call vote.*

*Ayes: Trustees Amara, Gilbert, Kelley and Stockwin*

*Noes: ∅ Abstain: ∅ Absent: Trustees Gayaldo, Holliday-Hanson and Hutchings*

**8. Board Review and Consideration of Resolution 2022-05**

*A motion to approve Resolution 2022-05 accepting the Preliminary Engineer's Report for the Expanded Services and Permanent Facility Assessment District and Scheduling the Public Hearing for July 18, 2022 was made by Trustee Gilbert, seconded by Trustee Stockwin, approved by roll call vote.*

*Ayes: Trustees Amara, Gilbert, Kelley and Stockwin*

*Noes: ∅ Abstain: ∅ Absent: Trustees Gayaldo, Holliday-Hanson and Hutchings*

*Trustee Gayaldo arrived at 4:45 PM*

**9. Board Review and Consideration to Award Contract to Replace Fence to Crusader fence Company**

*A motion to award contract to replace fence to crusader fence company was made by Trustee Gilbert, seconded by Trustee Amara, approved by roll call vote.*

*Ayes: Trustees Amara, Gayaldo, Gilbert, Kelley and Stockwin*

*Noes: ∅ Abstain: ∅ Absent: Trustees Holliday-Hanson and Hutchings*

**A. Board Review and Consideration of Resolution 2022-06 Amending the District Budget for fiscal year 2021-22**

*A motion to approve Resolution 2022-06 amending the District Budget for fiscal year 2021-22 was made by Trustee Gilbert, seconded by Trustee Amara, approved by roll call vote.*

*Ayes: Trustees Amara, Gayaldo, Gilbert, Kelley and Stockwin*

*Noes: ∅ Abstain: ∅ Absent: Trustees Holliday-Hanson and Hutchings*

**10. Board Review and Consideration to Vote for Special District Representative, Placer LAFCO**

*A motion to Select H. Gordon Ainsleigh, Auburn Recreation and Park District Board Member, for Special District Representative was made by Trustee Gilbert, seconded by Trustee Stockwin, approved by roll call vote.*

*Ayes: Trustees Amara, Gayaldo, Gilbert, Kelley and Stockwin*

*Noes: ∅ Abstain: ∅ Absent: Trustees Holliday-Hanson and Hutchings*

**11. Report from Personnel Committee Meeting**

**A. Approve Educational Assistance proposal for FY 2022-2023**

*There was a discussion to include educational reimbursement during budget approval*

*There was consensus that it would go in the budget.*

**12. Report from Finance Committee Meeting**

*The committee reviewed and discussed the budget.*

**13. Staff Reports**

*A. Eastern Placer Report – Ms. Falco provided a verbal report on eastern placer.*

*B. Public Information and Outreach Report – A written report was submitted. No additional items were reported.*

*C. Field Operations and Surveillance Report – A written report was submitted. No additional items were reported.*

*D. General Manager Report – A written report was submitted. No additional items were reported.*

**14. Board/Staff General Discussion:** *There were none.*

15. Announcements

- A. The District office will be closed on May 30, 2022 in observance of the Memorial Day Holiday. Next regular Board meeting will be held May 16, 2022 at 4:30 PM, at 2021 Opportunity Dr., Roseville, CA 95678 – Teleconference.
- B. The next regular Board meeting will be held June 20, 2022 at 4:30 PM, at 2021 Opportunity Dr., Roseville, CA 95678 - Teleconference

16. Adjournment:

President Kelley adjourned the meeting at 5:36 PM.

Minutes approved by the Board and dated, this 20<sup>th</sup> day of June, 2022 after passage.

Russ Kelley, Board President: \_\_\_\_\_  
Attest:

Isabel Alvarez, Board Secretary: \_\_\_\_\_

**This page was intentionally left blank.**

Board Review and Consideration that as a result of the COVID-19 emergency: (i) meeting in person would present imminent risks to the health or safety of attendees; and (ii) the meeting is authorized to be held by teleconference pursuant to Gov. Code, § 54953, subd. (e)(1)(C).

---

**Background:**

Consider finding by a majority vote under Gov. Code § 54953, subd. (e)(1)(B) that as a result of the COVID-19 emergency: (i) meeting in person would present imminent risks to the health or safety of attendees; and (ii) the meeting is authorized to be held by teleconference pursuant to Gov. Code, § 54953, subd. (e)(1)(C).

In light of the Governor's declaration that a state of emergency exists due to the incidence and spread of the novel coronavirus, and the pandemic caused by the resulting disease COVID-19, the board should consider whether meeting in person would present imminent risks to the health or safety of meeting attendees.

The Centers for Disease Control indicates that COVID-19 is a highly transmissible virus that is spread when an infected person breathes out droplets and very small particles that contain the virus, and such droplets and particles are breathed in by other people.<sup>1</sup> Since June of 2021, a more infectious variant of the virus, known as the Delta Variant, has emerged and now accounts for the vast majority of COVID-19 cases.

Although effective vaccines have been approved by the U.S. Food and Drug Administration for emergency use, vaccination rates are slow and have not yet reached a point to significantly control community transmission. As of **June 14, 2022, only 75.5% of Californians who are eligible to be vaccinated are fully vaccinated.**<sup>2</sup>

Those who become infected with COVID-19 are at risk of serious illness and death. **As of June 15, 1,012,392 Americans have died from the virus.**<sup>3</sup> Many more have been hospitalized with serious illness.

Conducting meetings by teleconference would directly reduce the risk of transmission among meeting attendees, including members of the public and agency staff, which has the ancillary effect of reducing risk of serious illness and death as well as reducing community spread of the virus.

If the authorization to meet by teleconference is not approved by a majority vote, then the meeting will adjourn after this item and the remaining agenda items will be rescheduled to a future in-person meeting.

---

<sup>1</sup> CDC Data Tracker: <https://covid.cdc.gov/covid-data-tracker/#datatracker-home>

<sup>2</sup> State of California Covid-19 Dashboard <https://covid19.ca.gov/vaccination-progress-data/>

<sup>3</sup> Johns Hopkins University Coronavirus Resource Center <https://coronavirus.jhu.edu/>

**Fiscal Impact:**

none

---

**Staff Recommendation:**

Staff recommends that the board find that it has reconsidered the state of the COVID-19 emergency, meeting in person continues to present imminent risks to the health or safety of attendees, and the board renews the prior authorization for meetings to be held by teleconference as authorized by subdivision (e)(1)(C) of section 54943 of the Government Code.



Fiscal Year 2022-2023

## Pay Scale

Effective July 1<sup>st</sup>, 2022

JOB CLASSIFICATIONS	STEPS (Hourly Pay Rates)				
	A	B	C	D	E
Accounting Technician	28.63	30.42	32.21	34.00	35.79
Assistant Manager	54.30	57.69	61.08	64.48	67.87
Field Station Manager	38.92	41.35	43.78	46.22	48.65
General Manager	67.25	71.45	75.66	79.86	84.06
Public Information Officer	39.45	41.91	44.38	46.84	49.31
Secretary	27.84	29.58	31.32	33.06	34.80
Senior Research Scientist	40.61	43.15	45.69	48.23	50.77
Supervisor	44.57	45.74	46.92		
Vector Biologist - Molecular	35.32	37.52	39.73	41.94	44.14
Vector Control Technician I	25.58	27.00	28.42		
Vector Control Technician II	32.21	34.22	36.24	38.25	40.26
Vector Control Technician Lead	41.31	42.40	43.49		

Approved by the Board of Trustees of the Placer Mosquito and Vector Control District (PMVCD) on **June 20, 2022**, in compliance with CalPERS CCR Title 2, Section 570.5 and PMVCD employee associations' Memorandums of Understanding. This pay scale will be updated annually at the beginning of each fiscal year, or as needed.

Attest:

Russell Kelley, Board President

Isabel Alvarez, Board Secretary

**This page was intentionally left blank.**

**RESOLUTION NO. 2022-07 - DRAFT**

**A RESOLUTION OF THE BOARD OF TRUSTEES  
OF THE PLACER MOSQUITO AND VECTOR CONTROL DISTRICT  
REQUESTING COLLECTION OF CHARGES ON TAX ROLL  
FOR TAX YEAR 2022-23**

TAX CODE NUMBER: 59700, 59701

DIRECT CHARGE NAME: Placer Mosquito and Vector Control

**WHEREAS**, the Placer Mosquito and Vector Control District (hereinafter "District") requests the County of Placer collect on the County tax rolls certain charges which have been imposed pursuant to the Government Code, the Health and Safety Code and Article XIIC and XIID of the California Constitution by the District, attached hereto, and

**WHEREAS**, the County has required as a condition of the collection of said charges that the District warrant the legality of said charges and defend and indemnify the County from any challenge to the legality thereof; and

**NOW, THEREFORE, BE IT RESOLVED** by the Board of Trustees of District as follows:

1. The Auditor-Controller of Placer County is requested to attach for collection on the County tax rolls those taxes, assessments, fees and/or charges, attached hereto.
2. The District warrants and represents that the taxes, assessments, fees and/or charges imposed by the District and being requested to be collected by Placer County comply with all requirements of state law, including but not limited to Articles XIIC and XIID of the California Constitution (Proposition 218).
3. The District releases and discharges County, and its officers, agents and employees from any and all claims, demands, liabilities, costs and expenses, damages, causes of action, and judgments, in any manner arising out of the collection by County on the property tax roll of any taxes, assessments, fees and/or charges on behalf of District.
4. In consideration for the County's collection of the charge through the County's property tax roll, the District agrees to and shall defend, indemnify and hold harmless the County, its officers, agents and employees (the "Indemnified Parties") from any and all claims, demands, liabilities, costs and expenses, damages, causes of action, and judgments, in any manner arising out of the collection by County of any of District's said taxes, assessments, fees and/or charges requested to be collected by County for District, or in any manner arising out of District's establishment and imposition of said taxes, assessments, fees and/or charges. District agrees that, in the event a judgment is entered in a court of law against any of the Indemnified Parties as a result of the collection of one of District's taxes, assessments, fees and/or charges, the County may offset the amount of the judgment from any other monies collected by County on behalf of District, including property taxes.

5. The District agrees that its officers, agents and employees will cooperate with the County by responding to all inquiries referred to District by County from any person concerning the District's taxes, assessments, fees and/or charges, and that District will not refer such persons to County officers and employees for response.
6. The District agrees to pay the County for the reasonable and ordinary charges to recoup its costs of placement and collection on the tax rolls at the agreed upon rate of 1% of the taxes, assessments, fees and/or charges, as provided by Government Code sections 29304 and 51800.

**PASSED AND ADOPTED** by the Board of Trustees of the Placer Mosquito and Vector Control District on the 18th day of June 2021 by the following vote:

AYES:        Ø  
NOES:        Ø  
ABSTAIN:    Ø  
ABSENT:     Ø

---

Russ Kelley, Board President

Attest:

---

Isabel Alvarez, Board Secretary

# PMVCD FY 2022-2023 DRAFT BUDGET

FY 22/23

## REVENUE

40010-TAXES-Current Secured Property	RC-0010-TAXES-Current Secured Property (40010)	61,275
40040-TAXES-Railroad Unitary Property	RC-0040-TAXES-Railroad Unitary Property (40040)	92
40050-TAXES-Unitary and Op Non-Unitary Property	RC-0050-TAXES-Unitary & Op Non-Unitary Property (40050)	2,294
40060-TAXES-Current Unsecured Property	RC-0060-TAXES-Current Unsecured Property (40060)	1,115
40090-TAXES-Delinquent Unsecured Property	RC-0090-TAXES-Delinquent Unsecured Property (40090)	15
40100-TAXES-Current Supplemental Property	RC-0110-TAXES-Current Supplemental Property (40100)	1,603
40110-TAXES-Delinquent Supplemental Property	RC-0120-TAXES-Delinquent Supplemental Property (40110)	1
40180-Other Taxes	RC-0230-Other Taxes (40180)	318,240
42010-Investment Income	RC-0580-Interest with Fiscal Agent (42010)	30,600
42030-Short-Term Rents and Concessions	RC-0600 Short-Term Rents & Concessions (GL42030)	6,000
44350-State Homeowners Property Tax Relief	RC-1440-Homeowners Property Tax Relief (44350)	387
46030-Direct Charges	RC-1720-Direct Charges (46030)	5,109,259
48030-Miscellaneous	RC-3080-Miscellaneous Other Revenues (48030)	20,000
		<b>5,550,882</b>

## EXPENDITURES

### Salaries and Benefits

		<b>PG700000</b>
51010-Salaries and Wages	SC-1810-Salaries and Wages (51010)	2,214,145
51030-Extra Help	SC-1816-Extra Help (51030)	27,200
51040-Overtime and Call Back	SC-1819-Overtime and Call Back (51040)	15,118
51210-Retirement	SC-1852-CalPERS (51210)	259,997
51220-Payroll Tax	SC-1855-FICA (51220)	45,845
51240-Other Postemployment Benefits (OPEB)	SC-1858-Other Postemployment Benefits (OPEB) (51240)	116,828
51350-Emp Benefits Other Agencies	SC-1888-Employee Benefits Other Agencies (51350)	418,228
51380-Other Benefits	SC-1897-Other Benefits (51380)	1,308
		<b>3,098,669</b>

55.8%

### Materials, Supplies and Services

		<b>PG700000</b>
52030-Clothing and Personal	SC-2040-Work Clothes (52030)	6,100
52040-Communication Services Expense	SC-2085-Communication Services - Telephone (52040)	40,192
52050-Food	SC-2110-Food and Water, All Types (52050)	800
52160-Maintenance	SC-2270-Equipment Maintenance and Repair Services for General Equipment (52160)	1,200
52240-Professional / Membership Dues	SC-2550-Membership / Registration / Association / Warranties (52240)	29,017
52330-Other Supplies	SC-2660-General Office Supplies (52330)	7,500
52340-Postage	SC-2790-Postage (52340)	275
52360-Professional and Special Services - General	SC-2820-Personnel Services (52360)	25,432
52360-Professional and Special Services - General	SC-2860-SB2557 Property Tax Admin Costs (52360)	1,285
52360-Professional and Special Services - General	SC-2900-Audit Costs (52360)	10,000
52360-Professional and Special Services - General	SC-2940-Consulting Services (52360)	-
52360-Professional and Special Services - General	SC-2945-Uniform Rental and Laundry Services (52360)	15,000
52360-Professional and Special Services - General	SC-3070-AB2838 - LAFCO Fees (52360)	2,275
52370-Professional and Special Services - Legal	SC-3130-Legal Services (52370)	15,000
52400-Professional and Special Services - Information Technology	SC-3370-Data Processing, Computer, Programming, and Software Services (52400)	6,150
52440-Rents and Leases - Equipment	SC-3460-Short-Term Equipment Rental or Lease Services - 1099 (52440)	2,647
52520-Trustee Meetings Compensation	SC-3630-Trustee Meetings Compensation (52520)	8,400
52570-Advertising	SC-3895-Publications and Legal Notices (52570)	1,500
52785-Education/Training Services (New GL)	SC-4000-Educational/Training Services (52785)	2,700
52590-Tuition Reimbursement	SC-4070-Tuition Reimbursement (52590)	4,000
52790-Transportation and Travel	SC-4280-Travel & Transportation (52790)	21,135
52790-Transportation and Travel	SC-4290-Mileage (52790)	2,250
52390-Professional and Special Services - County	SC-4705-Internal Professional and Special Services (Non-Interfund Transfer) (52390)	12,002
		<b>214,860</b>

11.5%

FY 21/22	Change \$	Change %
49,419	↑	11,856 24.0%
81	↑	11 13.9%
2,185	↑	109 5.0%
1,062	↑	53 5.0%
15	↑	1 5.0%
1,526	↑	76 5.0%
1	↑	0 5.0%
305,000	↑	13,240 4.3%
36,000	↓	(5,400) -15.0%
6,600	↓	(600) -9.1%
368	↑	18 5.0%
4,870,669	↑	238,590 4.9%
20,000	→	- 0.0%
<b>5,292,926</b>	<b>↑</b>	<b>257,955 4.9%</b>
1,921,100	↑	293,045 15.3%
93,146	↓	(65,946) -70.8%
12,736	↑	2,382 18.7%
237,841	↑	22,156 9.3%
47,583	↓	(1,738) -3.7%
187,895	↓	(71,067) -37.8%
386,230	↑	31,998 8.3%
1,199	↑	109 9.1%
<b>2,887,730</b>	<b>↑</b>	<b>210,939 7.3%</b>
5,900	↑	200 3.4%
38,278	↑	1,914 5.0%
800	→	- 0.0%
1,200	→	- 0.0%
24,738	↑	4,279 17.3%
5,300	↑	2,200 41.5%
275	→	- 0.0%
29,225	↓	(3,793) -14.9%
1,260	↓	25 1.9%
10,000	→	- 0.0%
9,850	↓	(9,850) -100.0%
13,446	↑	1,554 10.4%
2,627	↓	(352) -13.4%
15,000	→	- 0.0%
6,000	↑	150 2.4%
2,647	→	- 0.0%
8,400	→	- 0.0%
1,500	→	- 0.0%
1,500	↑	1,200 44.4%
8,000	↓	(4,000) -100.0%
6,930	↑	14,205 67.2%
2,250	→	- 0.0%
11,739	↑	263 2.2%
<b>206,865</b>	<b>↑</b>	<b>7,994 3.9%</b>

FY 22/23		
PG700000		
<b>Other Expenditures</b>		
53040-Lease Purchase Principal	SC-4720-Lease Purchase Principal (53040)	279,000
53080-Lease Purchase Interest	SC-4760-Lease Purchase Interest (53080)	61,001
52360-Professional and Special Services - General	SC-2840-Collection Charges (52360)	90,443
52080-Insurance	SC-2140-Insurance and Insurance Services (52080)	187,013
		<b>617,456</b> 11.1%
<b>Information Technology</b>		
PG700001		
52400-Professional and Special Services - Information Technology	SC-3370-Data Processing, Computer, Programming, and Software Services (52400)	45,172
52400-Professional and Special Services - Information Technology	SC-3380-Computer Management Services (52400)	94,004
52480 - PC Acquisition	SC-3560-Computer, Handheld, Laptop, and Notebooks (52480)	10,500
		<b>149,676</b> 2.7%
<b>Facility &amp; Vehicles</b>		
PG700002		
52060-Household Expense	SC-2120-Janitorial Supplies (52060)	1,448
52140-Parts	SC-2200-Automotive Accessories, Equipment and Parts (52140)	14,000
52160-Maintenance	SC-2260-Equipment Maintenance and Repair Services for Vehicles & Aircraft (52160)	17,300
52160-Maintenance	SC-2270-Equipment Maintenance and Repair Services for General Equipment (52160)	1,000
52170-Fuels & Lubricants	SC-2340-Gasoline All Types (52170)	51,750
52190-Maintenance - Janitorial	SC-2430-Janitorial Management Services (52190)	6,780
52161-Maintenance-Building	SC-2861-Maintenance-Building - 1099 Reportable (52161)	35,961
52360-Professional and Special Services - General	SC-3010-Alarm Services (52360)	7,374
52380-Professional and Special Services - Technical, Engineering and Environmental	SC-3150-Grounds Maintenance Services (52380)	4,740
52380-Professional and Special Services - Technical, Engineering and Environmental	SC-3280-Security, Fire, Safety, and Emergency Services not otherwise classified (52380)	446
52440-Rents and Leases - Equipment	SC-3460-Short-Term Equipment Rental or Lease Services - 1099 (52440)	6,000
52460-Small Tools & Instruments	SC-3530-Hardware and Related Items (52460)	3,500
52650-Landfill Dump Fee	SC-4130-Landfill Dump Fee (52650)	110
52800-Utilities	SC-4340-Utilities (52800)	76,167
		<b>226,576</b> 4.1%
<b>Tahoe Substation</b>		
PG700003		
52180-Materials - Buildings & Improvements	SC-2360-Builder's Supplies (52180)	1,500
52220-Laboratory Supplies	SC-2521-Laboratory Equipment (52220)	1,000
52161-Maintenance-Building	SC-2861-Maintenance-Building - 1099 Reportable (52161)	1,000
52450-Rents and Leases - Buildings & Improvements	SC-3480-Short Term Real Property Rental or Lease (52450)	26,989
52460-Small Tools & Instruments	SC-3530-Hardware and Related Items (52460)	500
52800-Utilities	SC-4340-Utilities (52800)	3,379
		<b>34,368</b> 0.6%
<b>Surveillance</b>		
PG700004		
52220-Laboratory Supplies	SC-2480-Clinical Laboratory Reagents and Tests (52220)	30,000
52220-Laboratory Supplies	SC-2500-Gases, Lab / Medical / Welding (52220)	10,000
52220-Laboratory Supplies	SC-2521-Laboratory Equipment (52220)	31,300
52245-Warranties	SC-2555-Warranties (52245)	6,284
52380-Professional and Special Services - Technical, Engineering and Environmental	SC-3255-Vector and Disease Testing (52380)	1,000
52380-Professional and Special Services - Technical, Engineering and Environmental	SC-3322-Hazardous Waste (52380)	3,725
52560-Small Equipment	SC-3710-Electronic Equipment, Parts, and Accessories (52560)	500
		<b>82,809</b> 1.5%

FY 21/22	Change \$	Change %
269,000	⬆️	3.7%
69,386	⬇️	-12.1%
87,803	⬆️	3.0%
169,061	⬆️	10.6%
595,249	⬆️	3.7%
28,596	⬆️	36.7%
143,426	⬇️	-52.6%
-	⬆️	100.0%
172,022	⬇️	-13.0%
1,379	⬆️	5.0%
8,000	⬆️	75.0%
17,300	➡️	0.0%
1,000	➡️	0.0%
34,500	⬆️	50.0%
6,780	⬆️	0.0%
35,991	⬆️	0.2%
6,676	⬆️	9.5%
4,260	⬆️	10.1%
438	⬆️	2.0%
-	⬆️	100.0%
3,500	➡️	0.0%
110	➡️	0.0%
60,575	⬆️	20.5%
180,408	⬆️	25.6%
1,500	➡️	0.0%
1,000	➡️	0.0%
1,000	➡️	0.0%
25,704	⬆️	5.0%
500	➡️	0.0%
2,938	⬆️	13.0%
32,642	⬆️	5.3%
25,000	⬆️	16.7%
5,000	⬆️	100.0%
26,300	⬆️	19.0%
5,636	⬆️	10.3%
1,000	➡️	0.0%
3,725	➡️	0.0%
500	➡️	0.0%
67,161	⬆️	23.3%

			FY 22/23	
<b>Operations</b>			<b>PG700005</b>	
52020-Pesticides	SC-2030-Poisons, Pesticides and Chemicals - Agricultural and Industrial (52020)	610,893		
52210-Services	SC-2455-Airplane/Helicopter Services NOC (52210)	342,000		
52220-Laboratory Supplies	SC-2521-Laboratory Equipment (52220)	5,000		
52330-Other Supplies	SC-2650-First Aid and Safety Equipment and Supplies (52330)	8,418		
52380-Professional and Special Services - Technical, Engineering and Environmental	SC-3320-Environmental and Ecological Services (52380)	30,000		
52460-Small Tools & Instruments	SC-3530-Hardware and Related Items (52460)	7,000		
52560-Small Equipment	SC-3751-Industrial Machinery and Hardware (52560)	2,500		
		<b>1,005,811</b>	18.1%	
<b>Public Info &amp; Outreach</b>			<b>PG700006</b>	
52040-Communication Services Expense	SC-2090-Media Services (52040)	35,000		
52560-Small Equipment	SC-3881-Visual Education Supplies (52560)	12,000		
52570-Advertising	SC-3890-Marketing Services (52570)	73,657		
		<b>120,657</b>	2.2%	
<b>Revenue</b>			<b>5,550,882</b>	
<b>Expenditures</b>			<b>5,550,882</b>	
Budget Surplus/(Deficit)			0	
<b>Operating Budget</b>			<b>5,550,882</b>	

FY 21/22		Change \$	Change %
729,688	↓	(118,795)	-16.3%
322,000	↑	20,000	5.8%
5,000	→	-	0.0%
6,918	↑	1,500	21.7%
30,000	→	-	0.0%
7,000	→	-	0.0%
2,500	→	-	0.0%
<b>1,103,106</b>	↓	<b>(97,295)</b>	<b>-8.8%</b>
35,000	→	-	0.0%
10,000	↑	2,000	16.7%
79,500	↓	(5,843)	-7.3%
<b>124,500</b>	↓	<b>(3,843)</b>	<b>-3.1%</b>
5,292,926	↑	257,956	4.9%
5,369,684	↑	181,198	3.4%
5,369,684	↑	181,198	3.4%

**This page was intentionally left blank.**

## PMVCD FY 2022-2023 Draft Budget Expenditures

Program	Spend Category (SC)	Description of Internal Expenditure Category	FYE 2022 BUDGET	FYE 2023 PRELIM BUDGET	Change \$	Change %
0-Admin	SC-1810-Salaries and Wages (51010)	Employee Pay	1,889,027	2,159,768	↑ 270,741	14.3%
0-Admin	SC-1810-Salaries and Wages (51010)	Cashable annual leave	26,073	48,377	↑ 22,304	85.5%
0-Admin	SC-1810-Salaries and Wages (51010)	GM vehicle stipend	6,000	6,000	→ -	0.0%
0-Admin	SC-1816-Extra Help (51030)	Seasonal Wages	93,146	27,200	↓ (65,946)	-70.8%
0-Admin	SC-1819-Overtime and Call Back (51040)	Overtime	12,736	15,118	↓ 2,382	18.7%
0-Admin	SC-1852-CalPERS (51210)	Pension UL - Tier 1 (Rate Plan Identifier: 3908)	46,626	56,746	↑ 10,120	21.7%
0-Admin	SC-1852-CalPERS (51210)	Pension contribution (incl 1959 Surv Benefit)	185,410	196,657	↑ 11,247	6.1%
0-Admin	SC-1852-CalPERS (51210)	Pension UL - Tier 3 PEPRA (Rate Plan Identifier: 27127)	2,856	3,351	↑ 495	17.3%
0-Admin	SC-1852-CalPERS (51210)	Pension UL - Tier 2 (Rate Plan Identifier: 15015)	2,949	3,243	↑ 294	10.0%
0-Admin	SC-1855-FICA (51220)	Employer Paid taxes	47,583	45,845	↓ (1,738)	-3.7%
0-Admin	SC-1858-Other Postemployment Benefits (OPEB) (51240)	Health Benefit Payments to Retirees	22,418	33,314	↑ 10,896	48.6%
0-Admin	SC-1858-Other Postemployment Benefits (OPEB) (51240)	Actuarial Defined Contribution paid to CERBT trust to fund OPEB Liability	165,477	83,514	↓ (81,963)	-49.5%
0-Admin	SC-1888-Employee Benefits Other Agencies (51350)	Employee benefits (health & ancillary)	386,230	418,228	↑ 31,998	8.3%
0-Admin	SC-1897-Other Benefits (51380)	Employee Assistance Program	1,199	1,308	↑ 109	9.1%
0-Admin	SC-2040-Work Clothes (52030)	Boot Reimbursements	3,400	3,600	↑ 200	5.9%
0-Admin	SC-2040-Work Clothes (52030)	District logo clothing and hats	2,500	2,500	→ -	0.0%
0-Admin	SC-2085-Communication Services - Telephone (52040)	Landline, VOIP, ISP, and Mobile Service	38,278	40,192	↑ 1,914	5.0%
0-Admin	SC-2110-Food and Water, All Types (52050)	Meeting expense (snacks, coffee, water, etc.)	800	800	→ -	0.0%
0-Admin	SC-2140-Insurance and Insurance Services (52080)	VCJPA - Liability, Auto, Property, WC, ERMA, etc PLUS BTA	161,630	178,000	↑ 16,370	10.1%
0-Admin	SC-2140-Insurance and Insurance Services (52080)	VCJPA - UAS Insurance (4% of UAS value)	2,750	3,630	↑ 880	32.0%
0-Admin	SC-2140-Insurance and Insurance Services (52080)	AvQuest - Non-owned Aircraft Liability	4,681	5,383	↑ 702	15.0%
0-Admin	SC-2270-Equipment Maintenance and Repair Services for General Equipment (52160)	Buckmaster (Ricoh Copier Service Contract)	1,200	1,200	→ -	0.0%
0-Admin	SC-2550-Membership / Registration / Association / Warranties (52240)	Conference Registration and Memberships	24,738	29,017	↑ 4,279	17.3%
0-Admin	SC-2660-General Office Supplies (52330)	office equipment	2,000	4,000	↑ 2,000	100.0%
0-Admin	SC-2660-General Office Supplies (52330)	Office supplies including copy paper, desk supplies	3,300	3,500	↑ 200	6.1%
0-Admin	SC-2790-Postage (52340)	postage for District	275	275	→ -	0.0%
0-Admin	SC-2820-Personnel Services (52360)	Pre-employment drug testing Preferred Alliance	469	469	→ -	0.0%
0-Admin	SC-2820-Personnel Services (52360)	Preemployment screening (physicals, background check)	756	756	→ -	0.0%
0-Admin	SC-2820-Personnel Services (52360)	Labor Relations Consultant Services - Patrick Clark	18,000	18,000	→ -	0.0%
0-Admin	SC-2820-Personnel Services (52360)	Human Resources Consultant Services - RGS	10,000	6,207	↓ (3,793)	-37.9%
0-Admin	SC-2840-Collection Charges (52360)	Assessment Fees 1% - West East	29,379	30,618	↑ 1,239	4.2%
0-Admin	SC-2840-Collection Charges (52360)	Assessment Fees 1% - PFES	19,327	20,474	↑ 1,147	5.9%
0-Admin	SC-2840-Collection Charges (52360)	Assessment Fees 1% - Lincoln+AdValorem	3,597	3,850	↑ 254	7.1%
0-Admin	SC-2840-Collection Charges (52360)	SCI Consulting - Fees related to Collections	35,500	35,500	→ -	0.0%
0-Admin	SC-2860-SB2557 Property Tax Admin Costs (52360)	SB 2557 Property Tax Admin.	1,260	1,285	↑ 25	2.0%
0-Admin	SC-2900-Audit Costs (52360)	Independent Audit - Clifton, Larson, Allen, LLP	10,000	10,000	→ -	0.0%
0-Admin	SC-2940-Consulting Services (52360)	OPEB Actuarial Valuation - MacLoed Watt	9,850		↓ (9,850)	-100.0%
0-Admin	SC-2945-Uniform Rental and Laundry Services (52360)	Uniform Service -- Aramark Contract	13,446	15,000	↑ 1,554	11.6%
0-Admin	SC-3070-AB2838 - LAFCO Fees (52360)	LAFCO Fee	2,627	2,275	↓ (352)	-13.4%
0-Admin	SC-3130-Legal Services (52370)	District Counsel + other Attorney fees	15,000	15,000	→ -	0.0%
0-Admin	SC-3370-Data Processing, Computer, Programming, and Software Services (52400)	Placer County Accounting System Fee (Workday/IT)	6,000	6,150	↑ 150	2.5%
0-Admin	SC-3460-Short-Term Equipment Rental or Lease Services - 1099 (52440)	Everbank- Ricoh Copier lease	2,647	2,647	→ -	0.0%
0-Admin	SC-3630-Trustee Meetings Compensation (52520)	Trustee Stipend	8,400	8,400	→ -	0.0%
0-Admin	SC-3895-Publications and Legal Notices (52570)	seasonal job postings, legal notices, RFP postings	1,500	1,500	→ -	0.0%
0-Admin	SC-4000-Educational/Training Services (52785)	Training and Professional Development	1,500	2,700	↑ 1,200	80.0%
0-Admin	SC-4070-Tuition Reimbursement (52590)	Educational Assistance Program	8,000	4,000	↓ (4,000)	-50.0%
0-Admin	SC-4280-Travel & Transportation (52790)	Travel and Transportation	6,930	21,135	↑ 14,205	205.0%
0-Admin	SC-4290-Mileage (52790)	Mileage reimbursement	2,250	2,250	→ -	0.0%
0-Admin	SC-4705-Internal Professional and Special Services (Non-Interfund Transfer) (52390)	Placer County MOU (Accounting, payroll, financial stmt compilation, budget, appropriation limit)	11,739	12,002	↑ 263	2.2%
0-Admin	SC-4720-Lease Purchase Principal (53040)	Lease Roseville - Principle	269,000	279,000	↑ 10,000	3.7%
0-Admin	SC-4760-Lease Purchase Interest (53080)	Lease Roseville - Interest	69,386	61,001	↓ (8,384)	-12.1%
0-Admin	SC-5170-FA Buildings and Improvements (54430)	Cover for Parking	25,000		↓ (25,000)	-100.0%
0-Admin	SC-5210-Vehicles, All Types (54450)	UAS x 2 (DJI Phantom 4 Pro, DJI AGRAS T-10)			→ -	n/a

## PMVCD FY 2022-2023 Draft Budget Expenditures

Program	Spend Category (SC)	Description of Internal Expenditure Category	FYE 2022 BUDGET	FYE 2023 PRELIM BUDGET	Change \$	Change %
0-Admin	SC-5210-Vehicles, All Types (54450)	3 Chevy Silverado 1500s ordered via Enterprise Fleet	35,000		↓ (35,000)	-100.0%
0-Admin	SC-5220-FA Laboratory Equipment (54450)	PCR Machine Quantstudio 5 ( \$29,248)	65,000		↓ (65,000)	-100.0%
1-IT	SC-3370-Data Processing, Computer, Programming, and Software Services (52400)	Software License and Service Subscriptions for IT Infrastructure & TSAR	28,596	45,172	↑ 16,576	58.0%
1-IT	SC-3380-Computer Management Services (52400)	IT, System Admin, Database Admin, and Reporting Services	143,426	94,004	↓ (49,422)	-34.5%
1-IT	SC-3560-Computer, Handheld, Laptop, and Notebooks (52480)	Computer Hardware, mobile devices, and accessories		10,500	↑ 10,500	n/a
1-IT	SC-3710-Electronic Equipment, Parts, and Accessories (52560)	Computer Hardware, mobile devices, and accessories	5,500		↓ (5,500)	-100.0%
2-Fac&Veh	SC-2120-Janitorial Supplies (52060)	Restroom and cleaning supplies	1,379	1,448	↑ 69	5.0%
2-Fac&Veh	SC-2200-Automotive Accessories, Equipment and Parts (52140)	new vehicle setup (only if not capitalized)	3,000	9,000	↑ 6,000	200.0%
2-Fac&Veh	SC-2200-Automotive Accessories, Equipment and Parts (52140)	other replacement parts	5,000	5,000	⇒ -	0.0%
2-Fac&Veh	SC-2260-Equipment Maintenance and Repair Services for Vehicles & Aircraft (52160)	Fork Lift	300	300	⇒ -	0.0%
2-Fac&Veh	SC-2260-Equipment Maintenance and Repair Services for Vehicles & Aircraft (52160)	UTV and ATVs	1,000	1,000	⇒ -	0.0%
2-Fac&Veh	SC-2260-Equipment Maintenance and Repair Services for Vehicles & Aircraft (52160)	Future Ford	16,000	16,000	⇒ -	0.0%
2-Fac&Veh	SC-2270-Equipment Maintenance and Repair Services for General Equipment (52160)	SPI pump maintenance	1,000	1,000	⇒ -	0.0%
2-Fac&Veh	SC-2340-Gasoline All Types (52170)	Hunt and Sons- Fleet fuel account (Pac Pride/CFN)	34,500	51,750	↑ 17,250	50.0%
2-Fac&Veh	SC-2430-Janitorial Management Services (52190)	Janitorial Service	6,780	6,780	⇒ -	0.0%
2-Fac&Veh	SC-2861-Maintenance-Building - 1099 Reportable (52161)	Ice machine Service - Sac Ice	700	770	↑ 70	10.0%
2-Fac&Veh	SC-2861-Maintenance-Building - 1099 Reportable (52161)	Fire Extinguisher service and county fire inspection	1,591	1,591	⇒ -	0.0%
2-Fac&Veh	SC-2861-Maintenance-Building - 1099 Reportable (52161)	Roof Maintenance (annual)	2,000	2,000	⇒ -	0.0%
2-Fac&Veh	SC-2861-Maintenance-Building - 1099 Reportable (52161)	General Building Maintenance Projects	5,000	5,000	⇒ -	0.0%
2-Fac&Veh	SC-2861-Maintenance-Building - 1099 Reportable (52161)	Lab Certification: BSL lab, biosafety cabinet, fume hood	6,600	6,600	⇒ -	0.0%
2-Fac&Veh	SC-2861-Maintenance-Building - 1099 Reportable (52161)	HVAC Maintenance (Quarterly)	8,000	8,000	⇒ -	0.0%
2-Fac&Veh	SC-2861-Maintenance-Building - 1099 Reportable (52161)	Wash Bay Maintenance- Water Maze	12,000	12,000	⇒ -	0.0%
2-Fac&Veh	SC-3010-Alarm Services (52360)	Johnson Control (Fmr TYCO (Fmr. ADT) )Roseville	6,676	7,374	↑ 698	10.5%
2-Fac&Veh	SC-3150-Grounds Maintenance Services (52380)	Landscaping Service	4,260	4,740	↑ 480	11.3%
2-Fac&Veh	SC-3280-Security, Fire, Safety, and Emergency Services not otherwise classified (52380)	HAZMAT permit fee - City of Roseville Fire	438	446	↑ 9	2.0%
2-Fac&Veh	SC-3460-Short-Term Equipment Rental or Lease Services - 1099 (52440)	Rental Trucks for operations (~\$1100/mo for 6 months)		6,000	↑ 6,000	n/a
2-Fac&Veh	SC-3530-Hardware and Related Items (52460)	Miscellaneous Facility related parts and materials	3,500	3,500	⇒ -	0.0%
2-Fac&Veh	SC-4130-Landfill Dump Fee (52650)	Landfill Dump Fee	110	110	⇒ -	0.0%
2-Fac&Veh	SC-4340-Utilities (52800)	Roseville - water/sewer/electric	51,606	64,507	↑ 12,901	25.0%
2-Fac&Veh	SC-4340-Utilities (52800)	P.G. & E. gas Roseville	8,969	11,659	↑ 2,691	30.0%
3-Tahoe	SC-2360-Builder's Supplies (52180)	Facility replacement materials	1,500	1,500	⇒ -	0.0%
3-Tahoe	SC-2521-Laboratory Equipment (52220)	General Lab supplies	1,000	1,000	⇒ -	0.0%
3-Tahoe	SC-2861-Maintenance-Building - 1099 Reportable (52161)	Maintenance Services Tahoe (Non Vehicle Related)	1,000	1,000	⇒ -	0.0%
3-Tahoe	SC-3480-Short Term Real Property Rental or Lease (52450)	Tahoe sub-station facility lease	25,704	26,989	↑ 1,285	5.0%
3-Tahoe	SC-3530-Hardware and Related Items (52460)	Field and Lab Equipment (new, replacement, repair parts)	500	500	⇒ -	0.0%
3-Tahoe	SC-4340-Utilities (52800)	Utilities for Tahoe	2,938	3,379	↑ 441	15.0%
4-Surv	SC-2480-Clinical Laboratory Reagents and Tests (52220)	Mosquito and Tick pool supplies (consumable)	25,000	30,000	↑ 5,000	20.0%
4-Surv	SC-2500-Gases, Lab / Medical / Welding (52220)	CO2 and Dry Ice	5,000	10,000	↑ 5,000	100.0%
4-Surv	SC-2521-Laboratory Equipment (52220)	CO2 Bottles and Regulator, battery Replacement and Repair		5,000	↑ 5,000	n/a
4-Surv	SC-2521-Laboratory Equipment (52220)	Project Equipment and Supplies	2,000	2,000	⇒ -	0.0%
4-Surv	SC-2521-Laboratory Equipment (52220)	Supplies for efficacy evaluation and resistance testing	2,500	2,500	⇒ -	0.0%
4-Surv	SC-2521-Laboratory Equipment (52220)	Mosquito colony supplies, maintenance, and repair	4,000	4,000	⇒ -	0.0%
4-Surv	SC-2521-Laboratory Equipment (52220)	General lab & curating, field supplies	7,000	7,000	⇒ -	0.0%
4-Surv	SC-2521-Laboratory Equipment (52220)	Lab and Field equipment	10,800	10,800	⇒ -	0.0%
4-Surv	SC-2555-Warranties (52245)	PCR Machine Warranties (Quantstudio5-\$5024/yr, Chai - \$1260/three years start FY 2023)	5,636	6,284	↑ 648	11.5%
4-Surv	SC-3255-Vector and Disease Testing (52380)	DART Services: proficiency panel, etc	1,000	1,000	⇒ -	0.0%
4-Surv	SC-3322-Hazardous Waste (52380)	CDPH Medical Waste Management Program (MWMP)	25	25	⇒ -	0.0%
4-Surv	SC-3322-Hazardous Waste (52380)	Waste Disposal - Chemical	1,200	1,200	⇒ -	0.0%
4-Surv	SC-3322-Hazardous Waste (52380)	Waste Disposal - Biohazardous	2,500	2,500	⇒ -	0.0%
4-Surv	SC-3370-Data Processing, Computer, Programming, and Software Services (52400)	Software License and Service Subscriptions for SURV	5,636	-	↓ (5,636)	-100.0%
4-Surv	SC-3710-Electronic Equipment, Parts, and Accessories (52560)	Replacement Parts for Adult Mosquito Traps	500	500	⇒ -	0.0%
5-Ops	SC-2030-Poisons, Pesticides and Chemicals - Agricultural and Industrial (52020)	Public Health Insecticides and Adjvuents	729,688	610,893	↓ (118,795)	-16.3%
5-Ops	SC-2455-Airplane/Helicopter Services NOC (52210)	Aerial Application Contractors - Arena	250,000	270,000	↑ 20,000	8.0%

## PMVCD FY 2022-2023 Draft Budget Expenditures

Program	Spend Category (SC)	Description of Internal Expenditure Category	FYE 2022 BUDGET	FYE 2023 PRELIM BUDGET	Change \$	Change %
5-Ops	SC-2455-Airplane/Helicopter Services NOC (52210)	Aerial Application Contractors - VDCI	72,000	72,000	➡ -	0.0%
5-Ops	SC-2521-Laboratory Equipment (52220)	Fish Program Supplies	5,000	5,000	➡ -	0.0%
5-Ops	SC-2650-First Aid and Safety Equipment and Supplies (52330)	PPE for Lab	1,800	2,550	⬆ 750	41.7%
5-Ops	SC-2650-First Aid and Safety Equipment and Supplies (52330)	Safety Equipment, Spill Kits , PPE and First Aid	2,900	3,650	⬆ 750	25.9%
5-Ops	SC-2650-First Aid and Safety Equipment and Supplies (52330)	Spot GPS Equip & Annual Service - Tahoe	318	318	➡ -	0.0%
5-Ops	SC-2650-First Aid and Safety Equipment and Supplies (52330)	Safety program compliance items	1,900	1,900	➡ -	0.0%
5-Ops	SC-3320-Environmental and Ecological Services (52380)	Support for outside Mosquito-related Research - Subject to approval	30,000	30,000	➡ -	0.0%
5-Ops	SC-3370-Data Processing, Computer, Programming, and Software Services (52400)	Software License and Service Subscriptions for OPS	1,236	-	⬇ (1,236)	-100.0%
5-Ops	SC-3530-Hardware and Related Items (52460)	New, replacement & repair parts for Field Equip (dippers, sprayers)	2,000	2,000	➡ -	0.0%
5-Ops	SC-3530-Hardware and Related Items (52460)	General Maintenance Parts	2,500	2,500	➡ -	0.0%
5-Ops	SC-3530-Hardware and Related Items (52460)	MAC-UAS: replacement parts for UAS and associated equipment	2,500	2,500	➡ -	0.0%
5-Ops	SC-3751-Industrial Machinery and Hardware (52560)	Fishery Program -new equipment, replacement and maintenance	2,500	2,500	➡ -	0.0%
6-PR	SC-2090-Media Services (52040)	School assembly program (Modified video format for COVID-19)	35,000	35,000	➡ -	0.0%
6-PR	SC-3881-Visual Education Supplies (52560)	Repellent towelettes	-	2,000	⬆ 2,000	n/a
6-PR	SC-3881-Visual Education Supplies (52560)	Promotional Items	5,000	5,000	➡ -	0.0%
6-PR	SC-3881-Visual Education Supplies (52560)	Project (event) supplies and equipment	5,000	5,000	➡ -	0.0%
6-PR	SC-3890-Marketing Services (52570)	Advertising Campaigns	25,000	60,000	⬆ 35,000	140.0%
6-PR	SC-3890-Marketing Services (52570)	Sprout Social		1,800	⬆ 1,800	n/a
6-PR	SC-3890-Marketing Services (52570)	Mailchimp		852	⬆ 852	n/a
6-PR	SC-3890-Marketing Services (52570)	Sacramento Bee		240	⬆ 240	n/a
6-PR	SC-3890-Marketing Services (52570)	Sac Business Journal		145	⬆ 145	n/a
6-PR	SC-3890-Marketing Services (52570)	Canva Pro		120	⬆ 120	n/a
6-PR	SC-3890-Marketing Services (52570)	Website Maintenance and Development			➡ -	n/a
6-PR	SC-3890-Marketing Services (52570)	Community events fees	1,500	1,500	➡ -	0.0%
6-PR	SC-3890-Marketing Services (52570)	Printing brochures and materials	1,500	1,500	➡ -	0.0%
6-PR	SC-3890-Marketing Services (52570)	Professional Photography and Video	6,500	2,500	⬇ (4,000)	-61.5%
6-PR	SC-3890-Marketing Services (52570)	Graphic design/ Video production services	20,000	5,000	⬇ (15,000)	-75.0%
6-PR	SC-3890-Marketing Services (52570)	Triennial Public Opinion Survey - FYE 2025 (\$25k in 2022)	25,000		⬇ (25,000)	-100.0%
Invasives	SC-2030-Poisons, Pesticides and Chemicals - Agricultural and Industrial (52020)	Invasives Pesticides			➡ -	n/a
Invasives	SC-2521-Laboratory Equipment (52220)	CO <sub>2</sub> Bottles and Regulator, battery Replacement and Repair	4,600		⬇ (4,600)	-100.0%
Invasives	SC-3890-Marketing Services (52570)	Invasives Response Outreach	12,000		⬇ (12,000)	-100.0%

**This page was intentionally left blank.**

**DRAFT REVENUE  
FY 2022-2023**

Revenue Category (RC)	Description	FYE 2022 BUDGET	FYE 2023 DRAFT BUDGET	Change \$	Change %
OT-991006-Contingency (30210)	General Contingency			➡ \$ -	n/a
OT-991007-Capital Assets (30210)	Capital Asset Acquisition or Major Maintenance	125,000		↓ \$ (125,000)	↓ -100%
OT-991010-Future Occurance (30210)	Designated for Future Occ (Applied Research)			➡ \$ -	n/a
OT-991010-Future Occurance (30210)	Designated for Future Occ (Applied Research)			➡ \$ -	n/a
OT-991017-Other (30210)	Designated for Mosq Abatmt (Emergency Vector Control)	86,435		↓ \$ (86,435)	↓ -100%
RC-0010-TAXES-Current Secured Property (40010)	Portion of Sheridan Ad Valorem Taxes	49,419	61,275	↑ \$ 11,856	↑ 24%
RC-0040-TAXES-Railroad Unitary Property (40040)	Portion of Sheridan Ad Valorem Taxes	81	92	↑ \$ 11	↑ 14%
RC-0050-TAXES-Unitary & Op Non-Unitary Property (40050)	Portion of Sheridan Ad Valorem Taxes	2,185	2,294	↑ \$ 109	↑ 5%
RC-0060-TAXES-Current Unsecured Property (40060)	Portion of Sheridan Ad Valorem Taxes	1,062	1,115	↑ \$ 53	↑ 5%
RC-0070-TAXES-Delinquent Secured Property (40070)	Portion of Sheridan Ad Valorem Taxes	-	1	↑ \$ 1	n/a
RC-0090-TAXES-Delinquent Unsecured Property (40090)	Portion of Sheridan Ad Valorem Taxes	15	15	↑ \$ 1	↑ 5%
RC-0110-TAXES-Current Supplemental Property (40100)	Portion of Sheridan Ad Valorem Taxes	1,526	1,603	↑ \$ 76	↑ 5%
RC-0120-TAXES-Delinquent Supplemental Property (40110)	Portion of Sheridan Ad Valorem Taxes	1	1	↑ \$ 0	↑ 5%
RC-0230-Other Taxes (40180)	<b>Lincoln Special Tax from Tax</b>	305,000	318,240	↑ \$ 13,240	↑ 4%
RC-0580-Interest with Fiscal Agent (42010)	Interest with fiscal agent	36,000	30,600	↓ \$ (5,400)	↓ -15%
RC-1440-Homeowners Property Tax Relief (44350)	Portion of Sheridan Ad Valorem Taxes	368	387	↑ \$ 18	↑ 5%
RC-1720-Direct Charges (46030)	<b>East-West Benefit Assessment</b>	2,937,922	3,061,831	↑ \$ 123,909	↑ 4%
RC-1720-Direct Charges (46030)	<b>Perm Facility and Expanded Services Benefit Assessment</b>	1,932,747	2,047,428	↑ \$ 114,681	↑ 6%
RC-3080-Miscellaneous Other Revenues (48030)	Butte County MVCD Tick Testing Contract	4,000	4,000	➡ \$ -	➡ 0%
RC-3080-Miscellaneous Other Revenues (48030)	Shasta County MVCD Tick Testing Contract	4,000	4,000	➡ \$ -	➡ 0%
RC-3080-Miscellaneous Other Revenues (48030)	Sutter Yuba MVCD Tick Testing Contract	4,000	4,000	➡ \$ -	➡ 0%
RC-3080-Miscellaneous Other Revenues (48030)	Jackson County OR MVCD Tick Testing Contract	4,000	4,000	➡ \$ -	➡ 0%
RC-3080-Miscellaneous Other Revenues (48030)	Lane County OR MVCD Tick Testing Contract	4,000	4,000	➡ \$ -	➡ 0%
RC-0600 Short-Term Rents & Concessions (GL42030)	Red Shoe East Corner Rent @ 500 per month	6,600	6,000	↓ \$ (600)	↓ -9%
RC-3170-Proceeds from Sale of Capital Assets (49030)	Anticipated sale of surplus vehicles amd equipment	5,000		↓ \$ (5,000)	↓ -100%
<b>TOTAL</b>		<b>\$ 5,297,926</b>	<b>5,550,882</b>	<b>\$ 252,956</b>	<b>↑ 5%</b>

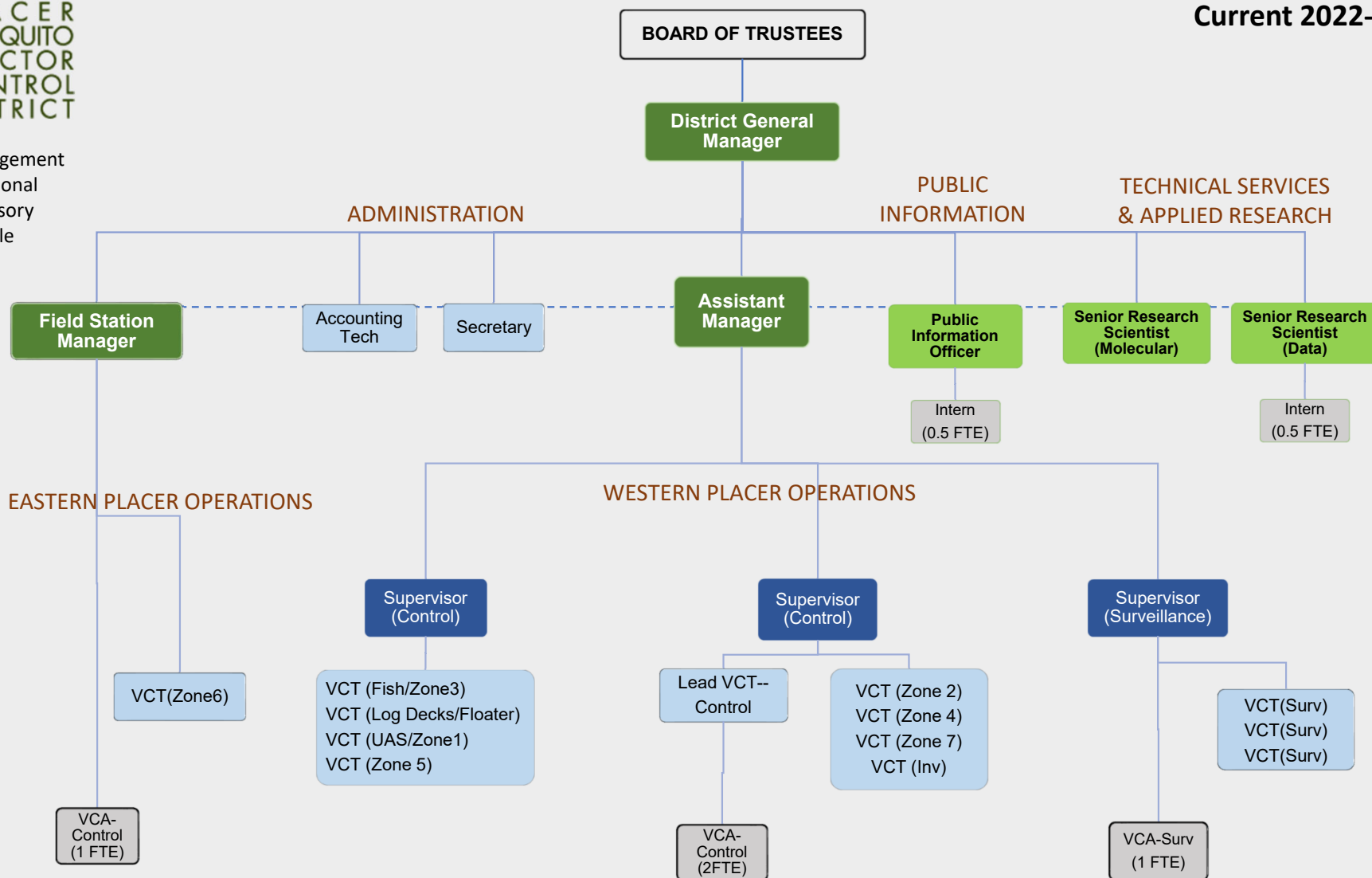
**This page was intentionally left blank.**



Current 2022-2023

**Dark Green** – Management  
**Lt Green** – Professional  
**Dark Blue** – Supervisory  
**Lt Blue** – Rank & File  
**Grey** – Temporary

TOTAL REG EE	24
VCTs	12
Lead VCT	1
Admin staff	2
Supervisors	3
Professional	3
Management	3



**This page was intentionally left blank.**

**RESOLUTION NO. 2022-08 - DRAFT**

**A RESOLUTION OF THE BOARD OF TRUSTEES  
OF THE PLACER MOSQUITO AND VECTOR CONTROL DISTRICT  
A RESOLUTION ADOPTING THE DISTRICT BUDGET  
FOR FISCAL YEAR 2022-23**

**BE IT RESOLVED** by the Board of Trustees of the Placer Mosquito and Vector Control District that the District budget for fiscal year 2022-23, Appendix A is hereby adopted and that the District General Manager or designated staff is authorized and directed to file a copy of the final budget with the Placer County Auditor's Office.

**PASSED AND ADOPTED** by the Board of Trustees of the Placer Mosquito and Vector Control District on the 20th day of June 2022 by the following vote:

AYES:       Ø  
NOES:       Ø  
ABSTAIN: Ø  
ABSENT: Ø

---

Russ Kelley, Board President

Attest:

---

Isabel Alvarez, Board Secretary

# PMVCD FY 2022-2023 DRAFT BUDGET

FY 22/23

## REVENUE

40010-TAXES-Current Secured Property	RC-0010-TAXES-Current Secured Property (40010)	61,275
40040-TAXES-Railroad Unitary Property	RC-0040-TAXES-Railroad Unitary Property (40040)	92
40050-TAXES-Unitary and Op Non-Unitary Property	RC-0050-TAXES-Unitary & Op Non-Unitary Property (40050)	2,294
40060-TAXES-Current Unsecured Property	RC-0060-TAXES-Current Unsecured Property (40060)	1,115
40090-TAXES-Delinquent Unsecured Property	RC-0090-TAXES-Delinquent Unsecured Property (40090)	15
40100-TAXES-Current Supplemental Property	RC-0110-TAXES-Current Supplemental Property (40100)	1,603
40110-TAXES-Delinquent Supplemental Property	RC-0120-TAXES-Delinquent Supplemental Property (40110)	1
40180-Other Taxes	RC-0230-Other Taxes (40180)	318,240
42010-Investment Income	RC-0580-Interest with Fiscal Agent (42010)	30,600
42030-Short-Term Rents and Concessions	RC-0600 Short-Term Rents & Concessions (GL42030)	6,000
44350-State Homeowners Property Tax Relief	RC-1440-Homeowners Property Tax Relief (44350)	387
46030-Direct Charges	RC-1720-Direct Charges (46030)	5,109,259
48030-Miscellaneous	RC-3080-Miscellaneous Other Revenues (48030)	20,000
		<b>5,550,882</b>

## EXPENDITURES

### Salaries and Benefits

**PG700000**

51010-Salaries and Wages	SC-1810-Salaries and Wages (51010)	2,214,145
51030-Extra Help	SC-1816-Extra Help (51030)	27,200
51040-Overtime and Call Back	SC-1819-Overtime and Call Back (51040)	15,118
51210-Retirement	SC-1852-CalPERS (51210)	259,997
51220-Payroll Tax	SC-1855-FICA (51220)	45,845
51240-Other Postemployment Benefits (OPEB)	SC-1858-Other Postemployment Benefits (OPEB) (51240)	116,828
51350-Emp Benefits Other Agencies	SC-1888-Employee Benefits Other Agencies (51350)	418,228
51380-Other Benefits	SC-1897-Other Benefits (51380)	1,308
		<b>3,098,669</b>

### Materials, Supplies and Services

**PG700000**

52030-Clothing and Personal	SC-2040-Work Clothes (52030)	6,100
52040-Communication Services Expense	SC-2085-Communication Services - Telephone (52040)	40,192
52050-Food	SC-2110-Food and Water, All Types (52050)	800
52160-Maintenance	SC-2270-Equipment Maintenance and Repair Services for General Equipment (52160)	1,200
52240-Professional / Membership Dues	SC-2550-Membership / Registration / Association / Warranties (52240)	29,017
52330-Other Supplies	SC-2660-General Office Supplies (52330)	7,500
52340-Postage	SC-2790-Postage (52340)	275
52360-Professional and Special Services - General	SC-2820-Personnel Services (52360)	25,432
52360-Professional and Special Services - General	SC-2860-SB2557 Property Tax Admin Costs (52360)	1,285
52360-Professional and Special Services - General	SC-2900-Audit Costs (52360)	10,000

**FY 22/23**

52360-Professional and Special Services - General	SC-2940-Consulting Services (52360)	-
52360-Professional and Special Services - General	SC-2945-Uniform Rental and Laundry Services (52360)	15,000
52360-Professional and Special Services - General	SC-3070-AB2838 - LAFCO Fees (52360)	2,275
52370-Professional and Special Services - Legal	SC-3130-Legal Services (52370)	15,000
52400-Professional and Special Services - Information Technology	SC-3370-Data Processing, Computer, Programming, and Software Services (52400)	6,150
52440-Rents and Leases - Equipment	SC-3460-Short-Term Equipment Rental or Lease Services - 1099 (52440)	2,647
52520-Trustee Meetings Compensation	SC-3630-Trustee Meetings Compensation (52520)	8,400
30210-Assigned Fund Balance	SC-3895-Publications and Legal Notices (52570)	1,500
30210-Assigned Fund Balance	SC-4000-Educational/Training Services (52785)	2,700
30210-Assigned Fund Balance	SC-4070-Tuition Reimbursement (52590)	4,000
30210-Assigned Fund Balance	SC-4280-Travel & Transportation (52790)	21,135
30210-Assigned Fund Balance	SC-4290-Mileage (52790)	2,250
30210-Assigned Fund Balance	SC-4705-Internal Professional and Special Services (Non-Interfund Transfer) (52390)	12,002
		<b>214,860</b>

**Other Expenditures**

**PG700000**

30210-Assigned Fund Balance	SC-4720-Lease Purchase Principal (53040)	279,000
30210-Assigned Fund Balance	SC-4760-Lease Purchase Interest (53080)	61,001
52360-Professional and Special Services - General	SC-2840-Collection Charges (52360)	90,443
52080-Insurance	SC-2140-Insurance and Insurance Services (52080)	187,013
		<b>617,456</b>

**Information Technology**

**PG700001**

52400-Professional and Special Services - Information Technology	SC-3370-Data Processing, Computer, Programming, and Software Services (52400)	45,172
52400-Professional and Special Services - Information Technology	SC-3380-Computer Management Services (52400)	94,004
52480 - PC Acquisition	SC-3560-Computer, Handheld, Laptop, and Notebooks (52480)	10,500
		<b>149,676</b>

**Facility & Vehicles**

**PG700002**

52060-Household Expense	SC-2120-Janitorial Supplies (52060)	1,448
52140-Parts	SC-2200-Automotive Accessories, Equipment and Parts (52140)	14,000
52160-Maintenance	SC-2260-Equipment Maintenance and Repair Services for Vehicles & Aircraft (52160)	17,300
52160-Maintenance	SC-2270-Equipment Maintenance and Repair Services for General Equipment (52160)	1,000
52170-Fuels & Lubricants	SC-2340-Gasoline All Types (52170)	51,750
52190-Maintenance - Janitorial	SC-2430-Janitorial Management Services (52190)	6,780
52161-Maintenance-Building	SC-2861-Maintenance-Building - 1099 Reportable (52161)	35,961
52360-Professional and Special Services - General	SC-3010-Alarm Services (52360)	7,374
52380-Professional and Special Services - Technical, Engineering and Environmental	SC-3150-Grounds Maintenance Services (52380)	4,740
52380-Professional and Special Services - Technical, Engineering and Environmental	SC-3280-Security, Fire, Safety, and Emergency Services not otherwise classified (52380)	446
52440-Rents and Leases - Equipment	SC-3460-Short-Term Equipment Rental or Lease Services - 1099 (52440)	6,000
52460-Small Tools & Instruments	SC-3530-Hardware and Related Items (52460)	3,500
30210-Assigned Fund Balance	SC-4130-Landfill Dump Fee (52650)	110
30210-Assigned Fund Balance	SC-4340-Utilities (52800)	76,167
		<b>226,576</b>

**FY 22/23**

**Tahoe Substation**

**PG700003**

52180-Materials - Buildings & Improvements	SC-2360-Builder's Supplies (52180)	1,500
52220-Laboratory Supplies	SC-2521-Laboratory Equipment (52220)	1,000
52161-Maintenance-Building	SC-2861-Maintenance-Building - 1099 Reportable (52161)	1,000
52450-Rents and Leases - Buildings & Improvements	SC-3480-Short Term Real Property Rental or Lease (52450)	26,989
52460-Small Tools & Instruments	SC-3530-Hardware and Related Items (52460)	500
30210-Assigned Fund Balance	SC-4340-Utilities (52800)	3,379
		<b>34,368</b>

**Surveillance**

**PG700004**

52220-Laboratory Supplies	SC-2480-Clinical Laboratory Reagents and Tests (52220)	30,000
52220-Laboratory Supplies	SC-2500-Gases, Lab / Medical / Welding (52220)	10,000
52220-Laboratory Supplies	SC-2521-Laboratory Equipment (52220)	31,300
52245-Warranties	SC-2555-Warranties (52245)	6,284
52380-Professional and Special Services - Technical, Engineering and Environmental	SC-3255-Vector and Disease Testing (52380)	1,000
52380-Professional and Special Services - Technical, Engineering and Environmental	SC-3322-Hazardous Waste (52380)	3,725
52560-Small Equipment	SC-3710-Electronic Equipment, Parts, and Accessories (52560)	500
		<b>82,809</b>

**Operations**

**PG700005**

52020-Pesticides	SC-2030-Poisons, Pesticides and Chemicals - Agricultural and Industrial (52020)	610,893
52210-Services	SC-2455-Airplane/Helicopter Services NOC (52210)	342,000
52220-Laboratory Supplies	SC-2521-Laboratory Equipment (52220)	5,000
52330-Other Supplies	SC-2650-First Aid and Safety Equipment and Supplies (52330)	8,418
52380-Professional and Special Services - Technical, Engineering and Environmental	SC-3320-Environmental and Ecological Services (52380)	30,000
52460-Small Tools & Instruments	SC-3530-Hardware and Related Items (52460)	7,000
52560-Small Equipment	SC-3751-Industrial Machinery and Hardware (52560)	2,500
		<b>1,005,811</b>

**Public Info & Outreach**

**PG700006**

52040-Communication Services Expense	SC-2090-Media Services (52040)	35,000
30210-Assigned Fund Balance	SC-3881-Visual Education Supplies (52560)	12,000
30210-Assigned Fund Balance	SC-3890-Marketing Services (52570)	73,657
		<b>120,657</b>

**Revenue**

**5,550,882**

**Expenditures**

**5,550,882**

Budget Surplus/(Deficit)

0

**Operating Budget**

**5,550,882**

**RESOLUTION NO. 2022-09 - DRAFT**

**A RESOLUTION OF THE BOARD OF TRUSTEES  
OF THE PLACER MOSQUITO AND VECTOR CONTROL DISTRICT  
AMENDING THE DISTRICT BUDGET  
FOR FISCAL YEAR 2022-23**

**WHEREAS**, The Board of Trustees (the "Board") of the Placer Mosquito and Vector Control District (the "District") County of Placer, State of California, have reviewed the budget and desire to change the approved final District Budget, and

**NOW, THEREFORE BE IT RESOLVED** as follows:

1) Amend the District Budget for Fiscal Year 22-23 by adjusting the following:

\$34,271 from Unassigned Fund Balance to SC2520 FA Laboratory Equipment (GL54450) for QuantStudio 5 qPCR machine.

**PASSED AND ADOPTED** by the Board of Trustees of the Placer Mosquito and Vector Control District on the 20th day of June 2022 by the following vote:

AYES:        Ø  
NOES:        Ø  
ABSTAIN:    Ø  
ABSENT:     Ø

---

Russ Kelley, Board President

Attest:

---

Isabel Alvarez, Board Secretary

**This page was intentionally left blank.**



# Field Operations and Surveillance Report

Prepared June 14, 2022

Assistant Manager: Jake Hartle

Supervisors: Mike Ashley, Scott Schon

## Mosquito Surveillance & Vector-borne Disease Testing

- **Adult Mosquito Abundance**

- During the month of May we have had minimal collections of our main vector species *Culex pipiens* and *Culex tarsalis* (Figure 1 & 2).
- During the week of June 12, the abundance of *Culex tarsalis*, which primarily breeds in the rice fields, substantially increased (Figure 2). These trap results are abnormal when compared to the 3-year average. This is potentially due to environmental conditions, such as temperature and the timing of the flooding of rice fields (Figure 2).

Figure 1: *Culex tarsalis* adult mosquito count per trap night (red line), compared to the three-year average (green bars) by calendar weeks. (Week 25 represents June 12-18)

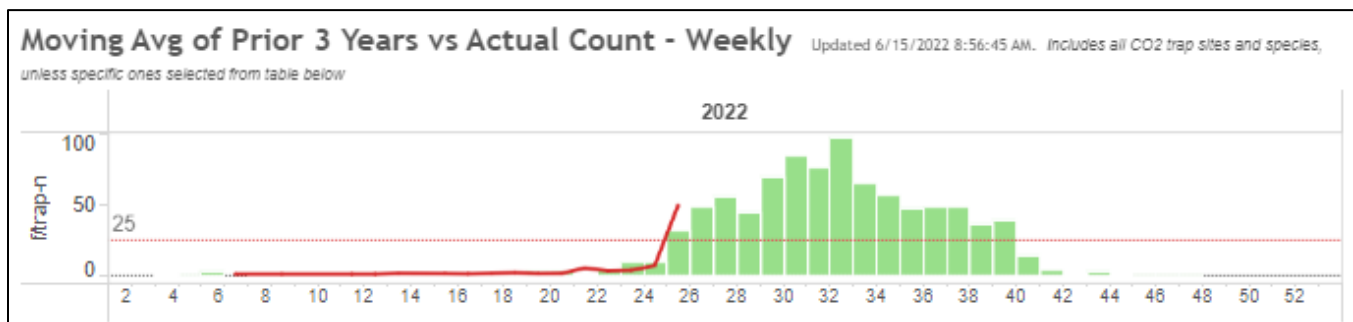
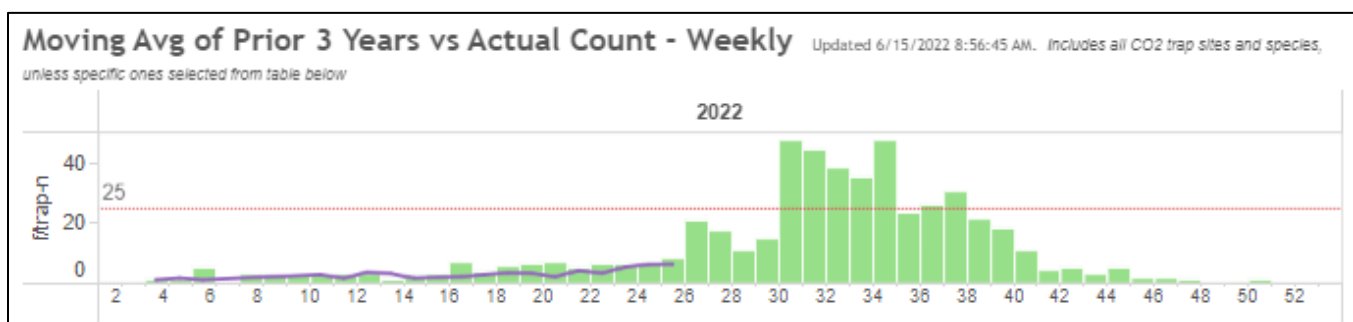


Figure 2: *Culex pipiens* adult mosquito count per trap night (purple line), compared to the three-year average (green bars) by calendar weeks. (Week 25 represents June 13-19)





- **Invasive Mosquitoes**

- There have been no *Aedes aegypti* detections since our initial detections 2019.
- Since 2019, several surrounding mosquito control districts have detected the invasive *Aedes aegypti*. In response we are increasing our invasive mosquito trapping and site inspections.

- **Vector-borne Disease Testing**

- Mosquitoes: Vector species collected are continuing to be tested, zero positive mosquito samples (WNV,SLE,WEE) have been detected in 2022.
- Dead Bird: Zero positive birds (WNV,SLE,WEE) have been detected in 2022.

Positive Detections for 2022 Year to Date (January 1- June 14)			
	WNV	SLE	WEE
Mosquito Samples	0	0	0
Dead Birds	0	0	0

## Operations

---

- **Source Work**

- Vector Control Technicians completed 95 service requests and made 305 treatments.

- **Larvicide Treatments**

- Larvicide treatments of Vectobac 12AS in the conventional rice fields started on May 30 and the treatments of VectoBac GR in the organic rice fields started on June 2.

- **Adulticide Treatments**

- Aircraft, trucks-foggers, and hand foggers have been calibrated and we are ready to initiate treatments if necessary. Large scale adulticide treatments by air or by ground are triggered after high abundance of *Culex* mosquitoes and the detection of West Nile virus activity, or a new detection of *Aedes aegypti*.

- **Unmanned Aircraft Systems (UAS)**

- UAS team treated 30 acres of organic rice.



- **Fisheries & Biological Control**

- In the month of May, Vector Control Technicians stocked 80 mosquito larval sites, totaling in over 1500 mosquitofish (*Gambusia affinis*).

Fish Production	May 2022	2022 Season to Date	2021 Season to Date
Adult mosquitofish stocked	1520 (3 lbs)	3385 (7.5 lbs)	5045 (11 lbs))
Fry produced in-house	2,883	0 (0 lbs)	3,633
Fish harvested from the wild	0 (0 lbs)*	0 (0 lbs)*	0 (0 lbs)*

*\*With the assumption of 450 adult fish per pound*

**This page was intentionally left blank.**

# General Manager's Report

Joel Buettner, General Manager

06/15/2022

The following activities have taken place since the regular Board meeting in May 2022.

## FINANCE

- Staff are working with Placer County to close FY 21/22. In addition to the fund balance issue reported last month, we continue to experience a lack of consistency in working with the County with handling capital asset acquisition, and when district policies differ from Placer County policies. We have been told that the Auditor-Controller's office are currently understaffed and experiencing rapid turn over in some positions.

## SECURITY UPGRADES TO BACK LOT

- The fence upgrade project is scheduled to begin on 6/22/2022.

## PCR MACHINE

- Our PCR machine is a critical piece of laboratory equipment used for vector borne disease testing. Since earlier this spring, we have identified inconsistencies with some of our testing results. Staff have been working with DART and other districts to diagnose the source of the problems, and determined that it was the machine itself. We originally purchased this machine in 2010, and have used it regularly since then. Without a working PCR machine, we are unable to test mosquitoes, birds and ticks for vector borne disease. We have implemented our operational backup plan to send mosquito samples to UC Davis DART for testing at \$22 per sample.
- On June 6, 2022, I called President Kelly to advise him of this situation and recommend that the district make immediate arrangements to make the following emergency unbudgeted purchases to pay for outside testing, and purchase two PCR machines to assure continued operations through July. President Kelley advised me to proceed and report back to the Board at this meeting.

We have placed orders or committed resources to the following items.

<b>1. Life Technologies Quantstudio 5 PCR Machine</b> (multiplex capable, 96 well plate) includes required laptop, extended warrantee, and credit of \$9975 for trade-in of old machine - FY 22/23	\$ 34,271.63 <b>EXPECTED JULY 2022</b>
<b>2. Chai Open qPCR Single Channel machine</b> (18 well plate) includes three-year service plan and initial supply of plastics – FY 21/22	\$ 8,629.08 <b>Received 6/15</b>
<b>3. Dart Testing @ \$22 per mosquito sample</b> estimate two weeks in June and three weeks in July = 400 pools – FY 21/22 & FY 22/23 potentially	\$ 8,800.00 <b>80 tests to date</b>
<b>TOTAL</b>	<b>\$ 51,700.71</b>

**UAS PROGRAM**

- We are still waiting for an exemption extension for our small spray UAS, and new exemption for our larger spray drone to be approved by the FAA to operate these UAS under our Part 137 Agricultural Aircraft operating permit. Because of the delay in getting these approvals were preventing us from operating, we applied for public aircraft certificate of authorizations as an alternative regulatory compliance method. We were granted a Public COA for our small spray UAS, and have been making operational UAS applications normally.
- We have submitted an additional Public COA request for the large spray drone, and received comments back from the FAA. We are working on responding to those comments and resubmitting the COA request. Until either this COA or the Part 137 exemption are approved by the FAA, we will be unable to legally operate our large spray UAS.