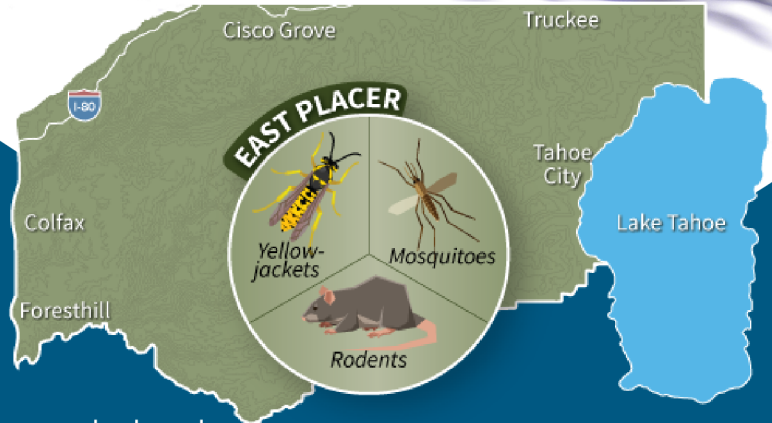




Did you know?

WE SERVE THE TAHOE BASIN.



The Placer Mosquito and Vector Control District works hard to protect East Placer from mosquitoes, yellowjackets, and rodents. The northwest part of the Tahoe Basin is in Placer County and is part of the District's service area. The District's Tahoe Basin substation was opened in 2009 near Truckee to provide vector control services to eastern Placer County, help manage mosquitoes and yellowjackets, and assist the California Department of Public Health with the community-wide risk of rodent-borne diseases like plague and hantavirus.



Service Requests

We respond to public service requests. For the fastest service, submit problem reports on our website.



Mosquitoes

Mosquitoes in the basin mostly occur with the melting of snow and pooling of rainwater. Snowmelt and Treehole mosquitoes are aggressive biters but do not transmit diseases like West Nile virus.



Yellowjackets

Yellowjackets do not carry disease but can cause uncomfortable stings and allergic reactions in some people. Our trained technicians can inspect and treat yellowjacket nests that are causing problems.



Rodents

Rodents are associated with serious diseases like plague and hantavirus. The District assists the CA Department of Public Health with mitigating community-wide risk and exposure.



Drones

Trained and certified drone pilots can access and treat environmentally sensitive areas in the basin. Drones are an important tool to protect public health in the Tahoe Basin.



PLACER
MOSQUITO
& VECTOR
CONTROL
DISTRICT

PLACERMOSQUITO.ORG/TAHOE

